

INTERNET CONNECTIONS

ASIN AQUA Net

ASIN AQUA Oxygen

ASIN AQUA Home

ASIN AQUA Salt

ASIN AQUA Pro

Internet Connection

The LAN connector is to be connected to the domestic router. Data are sent in the intervals of 10 seconds to the address *.**ddcol.net** the route must not be blocked by the firewall.

(means eight random alphanumeric characters)*

Connection of ASIN AQUA to your LAN is not complicated. You just need some basic IT skills. If you are not enough skilled to setup the connection by your own ask your IT specialist for help.

Possible Connection Methods

Home network

Connect the ASIN AQUA to your router via LAN cable.

Mobile network

In case you have no direct internet access you can use the data transmission over the mobile network. Connect the ASIN AQUA to your mobile network router via LAN cable.

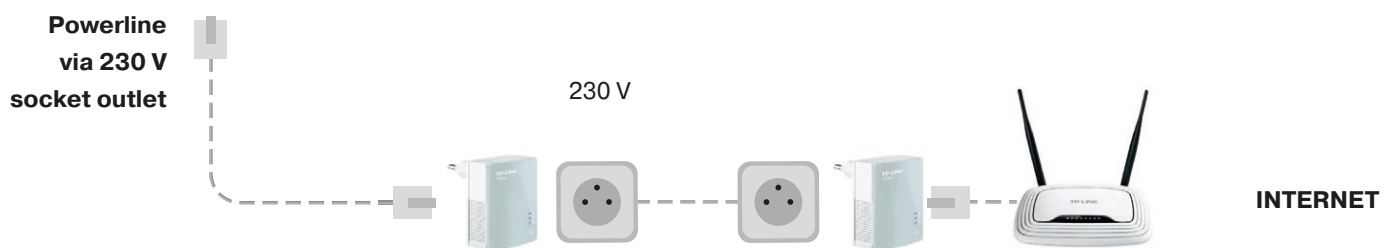
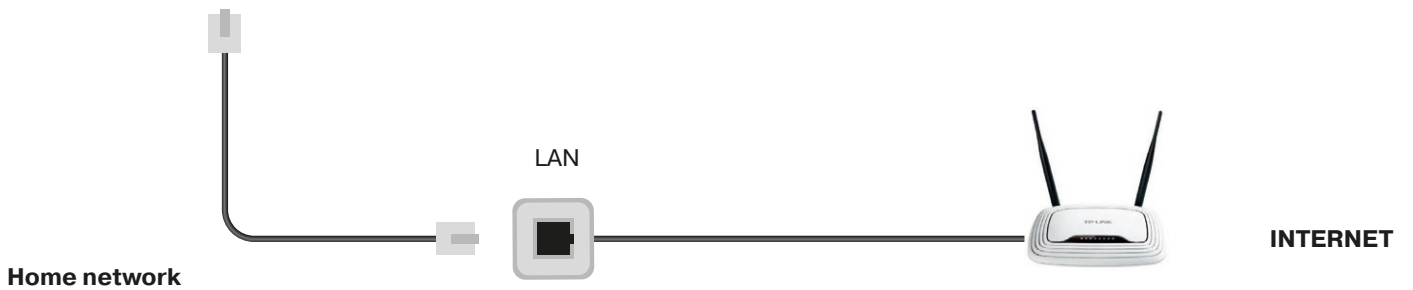
Wifi connection

If you install the ASIN AQUA in place where is no access to your private network by wired connection but your Wifi has enough signal, you can connect the ASIN AQUA to your Wifi by use of Wifi extender.

Powerline via 230V/DC

If you have no wired access to your LAN network but your ASIN AQUA is in the at the same electric network you can connect the LAN network via 230 V power line socket adapter.

ASIN AQUA Net
ASIN AQUA Oxygen
ASIN AQUA Home
ASIN AQUA Salt
ASIN AQUA Pro



ASEKO WEB SERVICES

Pool Live

An internet connection allows you to use the Pool Live mobile app to monitor your pool on mobile devices anywhere an internet connection is available.

Once ASIN AQUA is connected to the internet, download the Pool Live app to your smartphone. The app is available for iOS and Android.

When you first launch the app, the basic screen will prompt you to enter your ASIN AQUA serial number. If you have multiple ASEKO units with an internet connection, you can enter them all into one app with a simple registration.

Status

Shows the current status of the device, the measured values and the status of the controlled technologies.

Notification

Allows you to activate notifications for exceeded limits. Notifications can be enabled/disabled. Limits can be set manually.

Consumable

Ukazuje spotřebu chemie, životnost a stav čerpadel. K dispozici jsou podrobné grafy se spotřebou. Možnost DOPLNĚNÍ kanystřů a VÝMĚNY čerpadla. Shows chemical consumption, lifetime and pump status. Detailed consumption graphs are available. Possibility to REFILL canisters and CHANGE tubes.

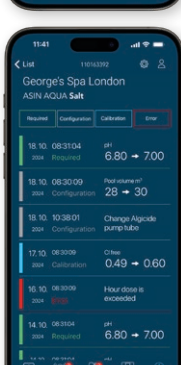
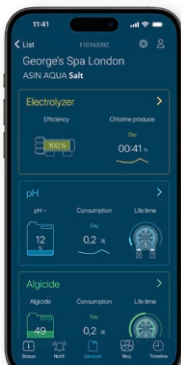
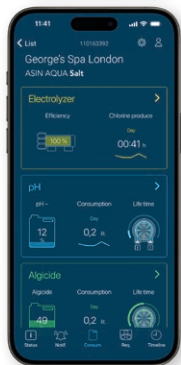
Pokud nenastavíte správný objem barelu nebo po doplnění nestiskne REFILL k nastavení 100%, systém není schopen správného odpočtu zbývajících množství.

Required

Displays the desired values set in the device, e.g. desired filtration time, desired pH value, disinfection, etc.

Timeline

Displays all device actions.



Web

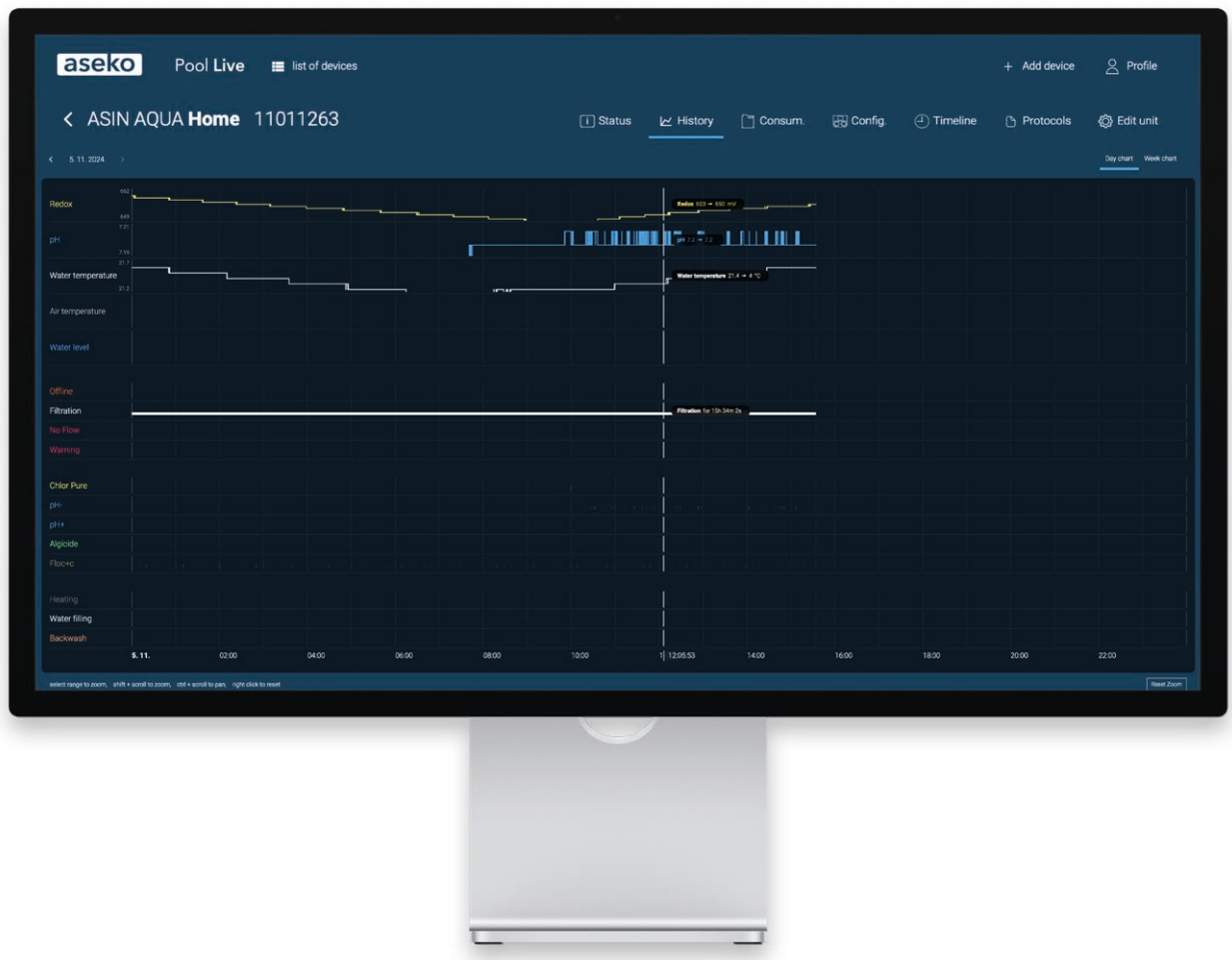
aseko.cloud

The web application for detailed monitoring of the pool water quality by means of well-arranged graphs. It shows all the measured parameters as well as ASIN AQUA actions up to 30 days back.

This application is giving you the detailed information of the pool status and detailed review of all events, taken actions and act levels of monitored items up to 30 days back.

Transparent graphic environment of chart lines is giving fast report and you can easily see interconnection of monitored values.

This application is useful at public pool installations where you need to observe the history and monitor the pool water quality and maintenance. In case of any discrepancy in water quality you can find all actions, provided in that moment and in relation to other values you can diagnose the reason of such discrepancy.



Internet Connection debugg

ASIN AQUA Net, Salt, Home, Pro units only send data to the server at ***.ddcol.net (pool.aseko.com)** on port 47524, so this **path must not be blocked by the firewall**.

(* means eight random alphanumeric characters)

Checking the visibility of the unit in the network

Scan your network using for example the tool Advanced IP Scanner to scan your network: <http://www.advanced-ip-scanner.com/>. Alternatively, LanScan for Apple MacOS available on AppStore.

The unit should be visible as **Jinan USR IOT Technology Co., Ltd.** or **USR-Kx** (where x can be 3, 4, 5, or 6).

Unit not visible in the network

Check the connection between the unit and the router.

1. Open the unit and locate the LAN adapter at the bottom left of the motherboard where the cable is connected. The LED lights on the adapter should be lit or blinking orange or green.
2. If LED lights are not blinking, the unit is not connected to the internet. If it is physically connected, it is a hardware issue. To rule out a fault with the unit, it must be sent for service to Aseka. Alternatively, you can try connecting the LAN cable directly to the port on the motherboard. If the device connects, it is necessary to replace the panel LAN connector located on the outside of the device or the connecting cable between the panel LAN connector and the connector on the motherboard.

Unit is visible in the network, but data is not being sent

1. Check the serial number of the unit. On the device screen click on settings, then on the button "i" at the bottom center, and check the SN (serial number) at the top left. If the serial number is different from what you expected, use this number in the app. If the serial number is 1 or 0, the unit needs to be sent to Aseka for service.
2. Ensure the router is not blocking outgoing data **to the address *.ddcol.net (pool.aseko.com) on port 47524**. This must be done in the administration interface of your router. Refer to the router manufacturer manual.

(* means eight random alphanumeric characters)

3. If none of the above options did not solve the communication issue check the LAN settings:
 - Enter the IP address of the device (shown by Advanced IP Scanner) into the web browser.
 - Use the login credentials: username: **admin**, password: **admin**.
 - Check the settings according to the images on next page.
 - If any value does not match, change it according to the image, then click Save and Restart the module.

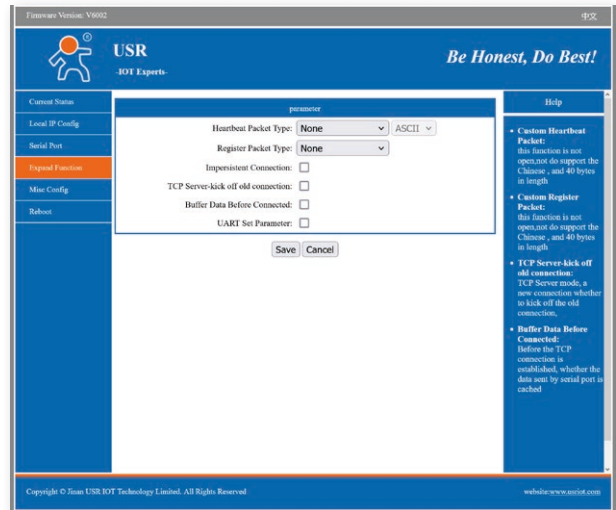
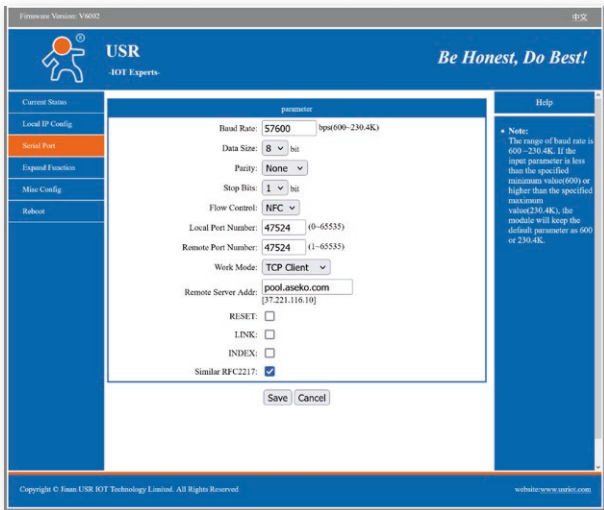
Further Steps

If you have checked everything in this document and data is still not being sent, the problem might be in your network or a hardware issue.

- **Network Issue:** Contact your IT professional to exclude any network problems.
- **Hardware Issue:** The unit needs to be sent to Aseko for service (service.asekopol.com).

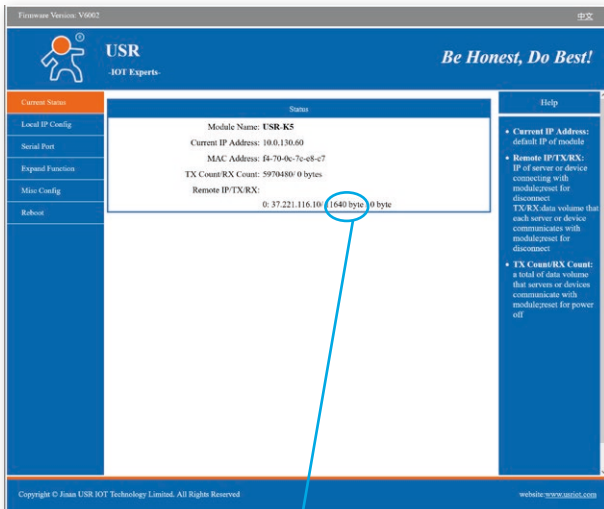
If you have a Lantronix LAN converter **Lantronix**, contact Aseko for an individual solution.

* displayed screens may vary slightly - depending on USR



Tab Serial port

Tab Expand function



Current status - sending data

If the device sends data to the Internet, this number increases.

